



FOR LEASE

Fithian Building Second Floor Offices

629 State Street

Santa Barbara, CA 93101

PROPERTY DETAILS

- The Fithian Building is a historic two-story retail and office building prominently located in the center of downtown Santa Barbara's retail district
- Adjacent to farmer's market on Tuesday
- High foot traffic volume
- Neighboring retailers on this block include Billabong, Vans, Volcom, Yogurtland, and The Habit Burger.
- Existing 2nd floor tenant mix includes therapists, engineers, attorneys, photographers and artists, and various private office user



01 – Fithian Building historical photo.



ISAIAH BOLTON | ISAIAH@INVESTECRE.COM | 805.690.1021 | DRE LIC. NO. 02136939
WWW.INVESTECRE.COM | 200 E. CARRILLO STREET, SUITE 200 | SANTA BARBARA, CALIFORNIA 93101

SUITE 203

- Rate: \$1,275/mo. Gross Rent
- Square feet: 435 sf

SUITE 203C

- Rate: \$1,350/mo. Gross Rent
- Square feet: 458 sf

SUITE 212

- Rate: \$1,300/mo. Gross Rent
- Square feet: 637 sf

SUITE 229

- Rate: \$500/mo. Gross Rent
- Square feet: 172 sf

SUITE 230

- Rate: \$650/mo. Gross Rent
- Square feet: 229 sf

SUITE 246

- Rate: \$1,100/mo. Gross Rent
- Square feet: 437 sf

SUITE 248

- Rate: \$1,100/mo. Gross Rent
- Square feet: 440 sf

Gross Rent: All utilities included (excluding insurance and internet)

FLOOR PLAN



COMMON AREA & BUILDING AMENITIES



AVAILABLE SUITE INTERIORS



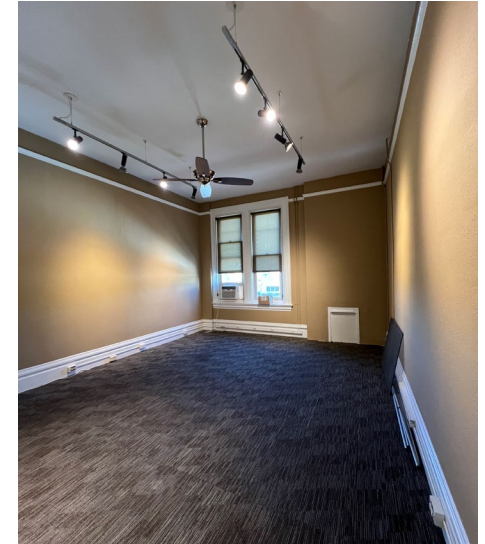
02 – Suite 203 facing State St.



03 – Suite 203b facing State St.



04 – Suite 203c facing State St.



05 – Suite 246 with Large Windows