



FOR LEASE

Premier Corner State Street Retail & Full Floor Office Opportunity

1036 State Street/8 E. Figueroa Street

Santa Barbara, CA 93101

PROPERTY DETAILS

- 32,455 square foot, high profile downtown Santa Barbara mixed use building
- Located in the heart of Downtown on the corner of State Street and Figueroa Street
- Excellent visibility and foot traffic
- Surrounded by restaurants, cafés, downtown shopping and daily amenities



WWW.INVESTECRE.COM | 200 E. CARRILLO STREET, SUITE 200 | SANTA BARBARA, CALIFORNIA 93101

CROSBY SLAUGHT
805.690.1017 | CROSBY@INVESTECRE.COM
DRE LIC. NO. 01939629

ISAIAH BOLTON
805.690.1021 | ISAIAH@INVESTECRE.COM
DRE LIC. NO. 02136939

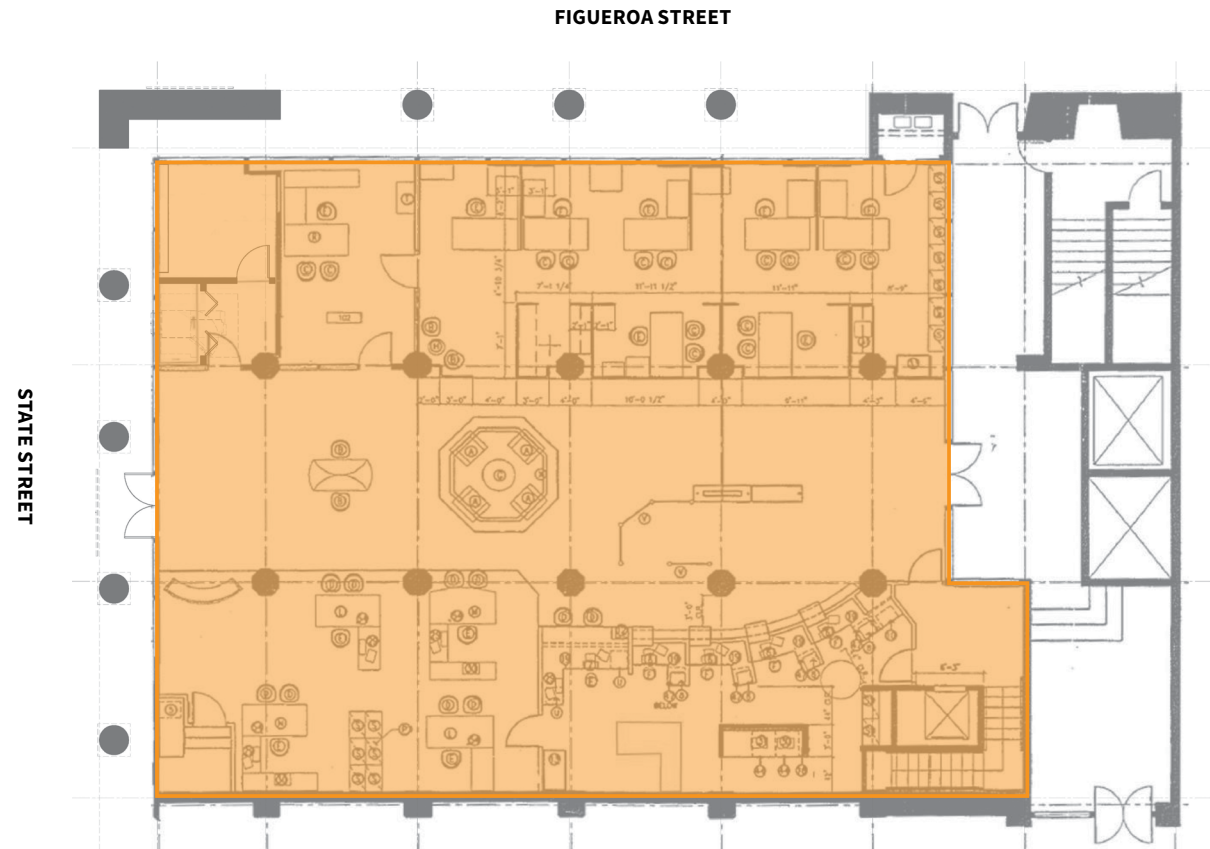
1036 STATE STREET

- 4,632 square feet on ground floor
- 5,755 square feet lower level space with vault and restrooms
- Ground Floor Rental Rate: \$4.25 NNN (\$1.31)
- 67 feet of frontage on State St.
- 77 feet of frontage on Figueroa St.
- Currently built out as a bank
- Zoning: C-2
- Parking: City Lots



01 – State Street frontage.

GROUND FLOOR PLAN



2ND FLOOR SINGLE TENANT FLOOR

- Potential to create a single-tenant floor plan
- 9,607 rentable square feet
- \$2.65 NNN (\$1.31)
- Extensive build out of space available with long-term lease
- Window lines on all four walls of premises
- Served by elevator

Contact listing agent for more information.



POTENTIAL 2ND FLOOR SINGLE TENANT FLOOR PLAN



SUITE 210

- 997 square feet
- \$2.65 NNN (\$1.31)
- Two private offices with windows facing Figueroa Street and reception area

SUITE 220

- 5,413 square feet
- \$2.65 NNN (\$1.31)
- Three Private Offices, conference room and kitchenette
- Window Line over looking State St.
- Turn-Key with furniture

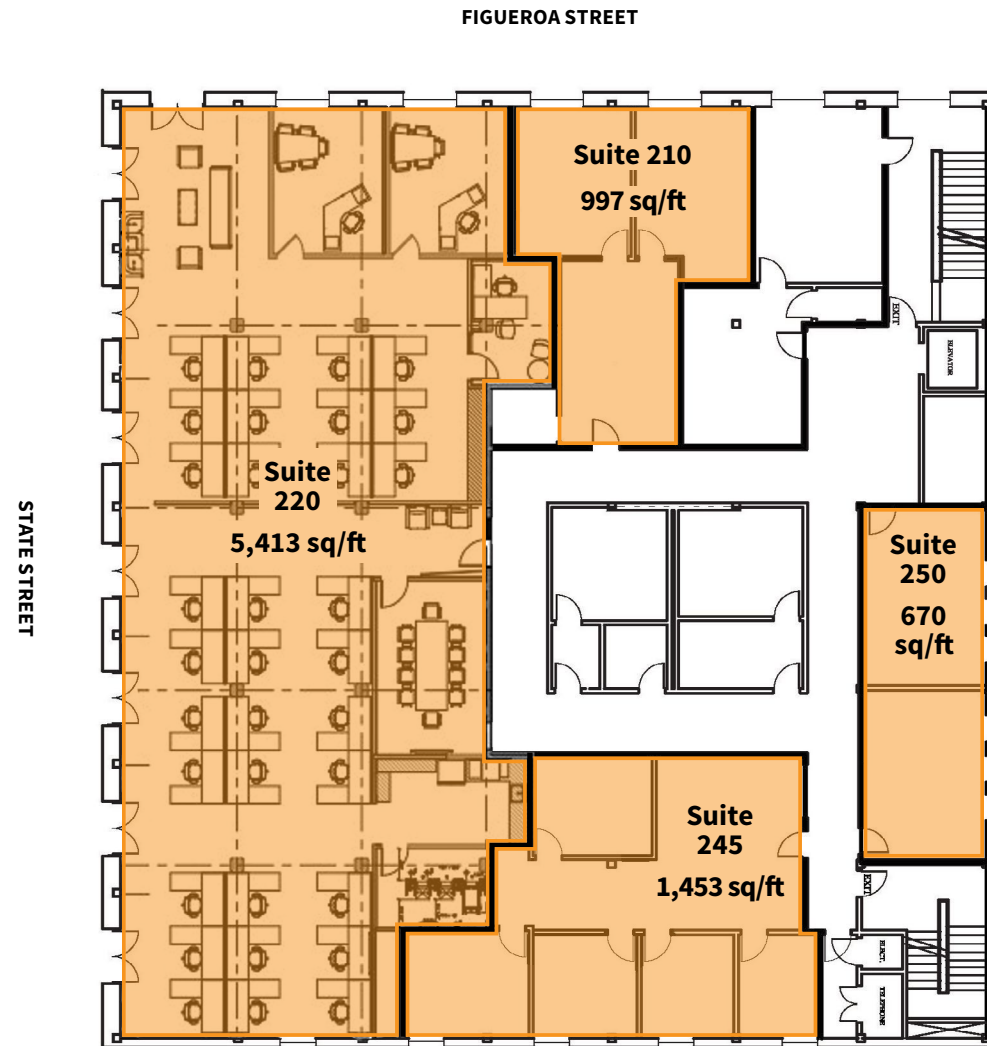
SUITE 245

- 1,453 square feet
- \$2.65 NNN (\$1.31)
- Four window lined private offices

SUITE 250

- 670 square feet
- \$2.65 NNN (\$1.31)
- Two window lined private offices

EXISTING 2ND FLOOR MULTI-TENANT FLOOR PLAN



SUITE 220 INTERIOR PHOTOS

