



1101 Anacapa Street

PRICE REDUCTION - \$3.00 GROSS

FOR SUBLEASE

DESCRIPTION

1101 Anacapa is a premier office and retail building located on the corner of Anacapa Street and E. Figueroa Street, in downtown Santa Barbara. Located one block off of State Street and adjacent to the historic Santa Barbara Courthouse, this property offers excellent visibility in an amenity rich area.

FEATURES

- Frontage on E. Figueroa Street
- Floor to ceiling windows
- Open floorplan
- Building signage on E. Figueroa St. and Anacapa St.

CROSBY SLAUGHT

DRE Lic. No. 01939629

805.690.1017

crosby@investecre.com

200 E. Carrillo Street, #200
Santa Barbara, CA 93101
www.investecre.com

Corner of E. Figueroa Street and Anacapa Street

HIGHLIGHTS

Location, visibility and layout make this space an ideal combination for a bank, wealth management, tech company or professional services.

Neighboring tenants include, Wells Fargo, American Riviera Bank, Pacific Western Bank, Jeannine's Bakery & The French Press.

PROPERTY ADDRESS

1101 Anacapa Street
Santa Barbara, CA
93101



INVESTEC
REAL ESTATE COMPANIES



1101 Anacapa Street

PREMIUM CORNER BUILDING

- Central to all that downtown Santa Barbara has to offer.
- Located a half block from La Arcada, which offers a mix of restaurants and retail stores.
- Adjacent to the historic Santa Barbara Courthouse and Sunken Gardens.



CROSBY SLAUGHT

DRE Lic. No. 01939629

805.690.1017

crosby@investecre.com

200 E. Carrillo Street, #200

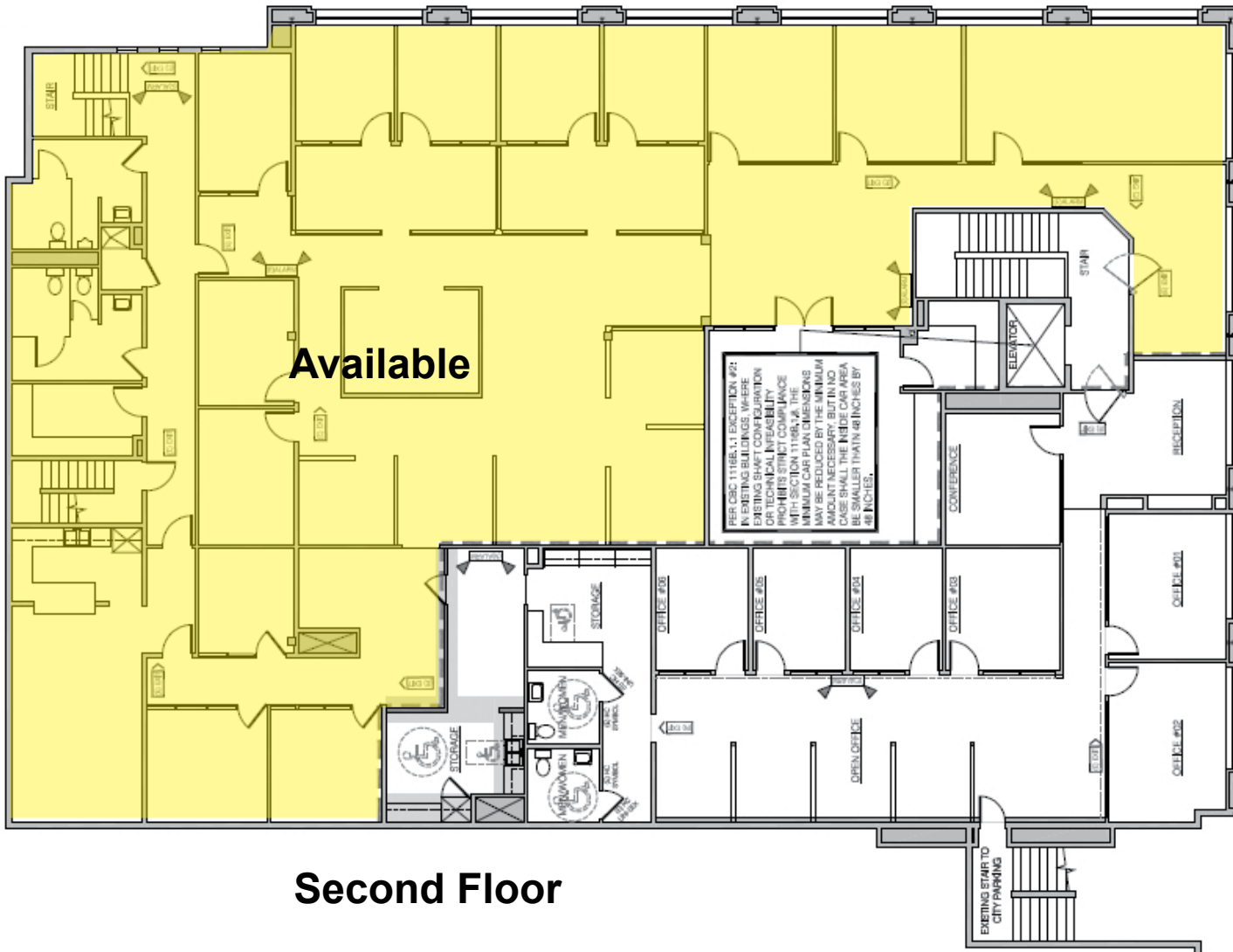
Santa Barbara, CA 93101

www.investecre.com



Corner of E. Figueroa Street and Anacapa Street





Second Floor

SUITE 200 DETAILS

SUBLEASE RATE: \$3.00 GROSS

SQ. FOOTAGE: 7,677

SUBLEASE TERM: Thru Dec. 31, 2020

DIRECT TERM: 5+ Years

PARKING: 6 Reserved Spaces

ZONING: Commercial

RESTROOMS: Private In Suite

SHOWER: In Suite

FURNITURE Included

HVAC: Throughout

AVAILABLE: Now

CROSBY SLAUGHT

DRE Lic. No. 01939629

805.690.1017

crosby@investecre.com

200 E. Carrillo Street, #200
Santa Barbara, CA 93101
www.investecre.com

